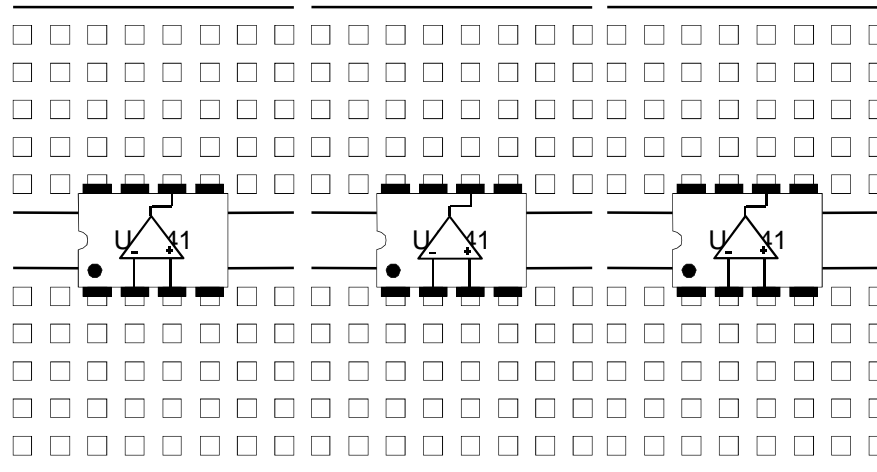
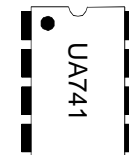
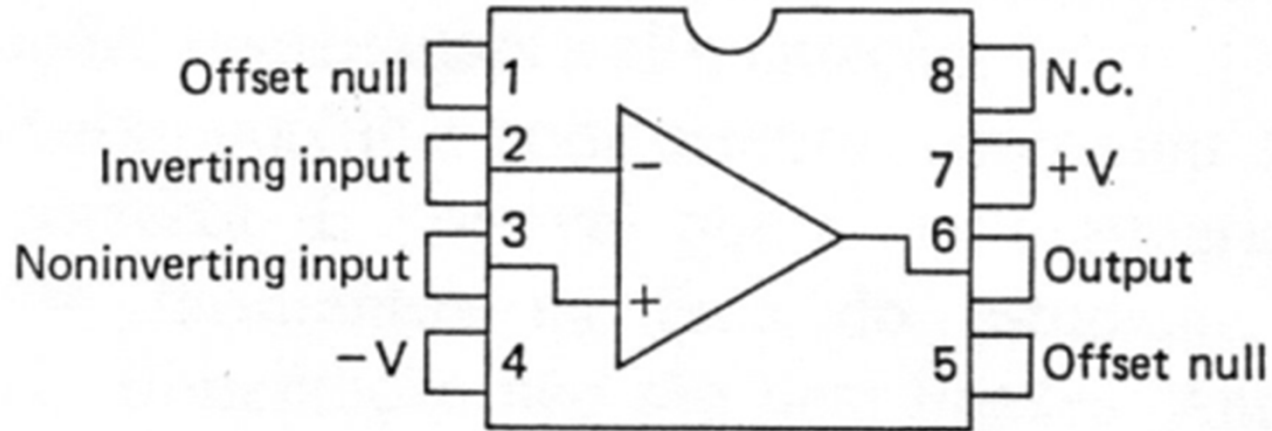
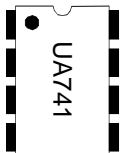
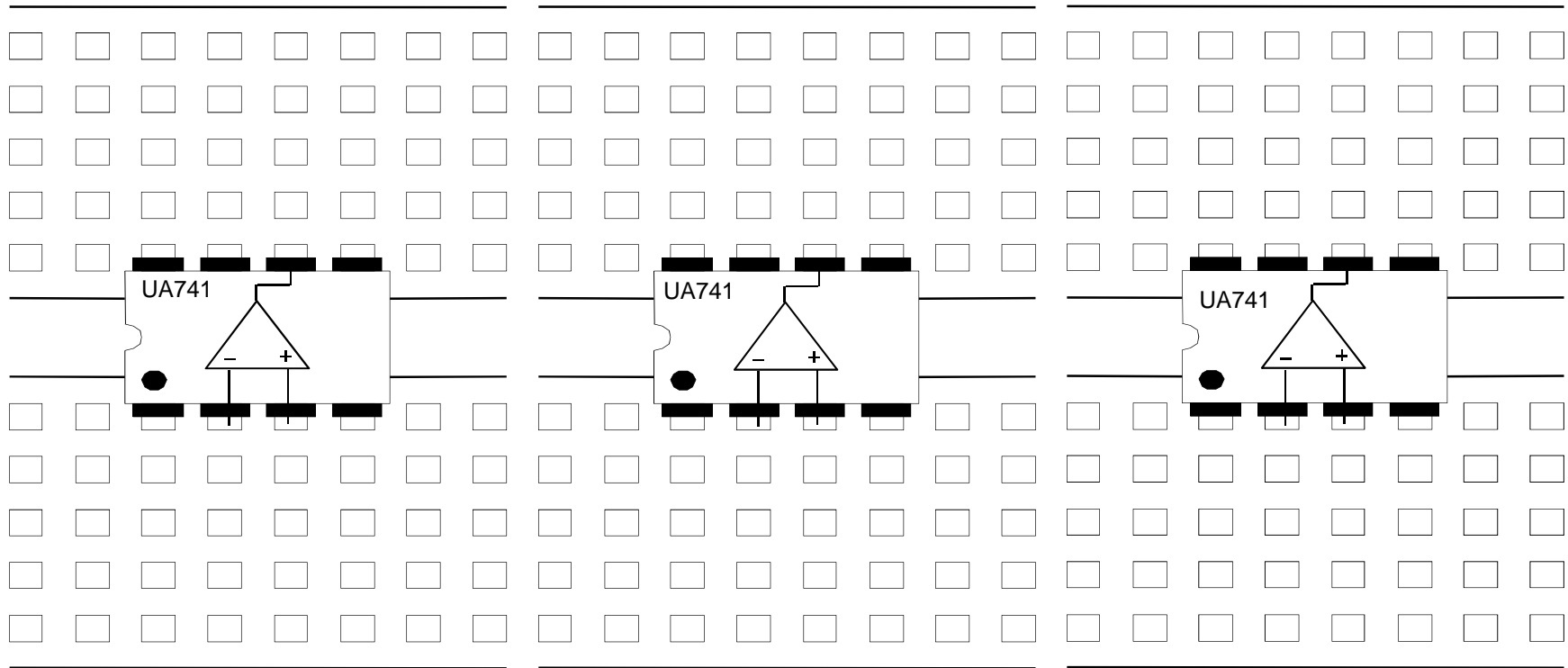
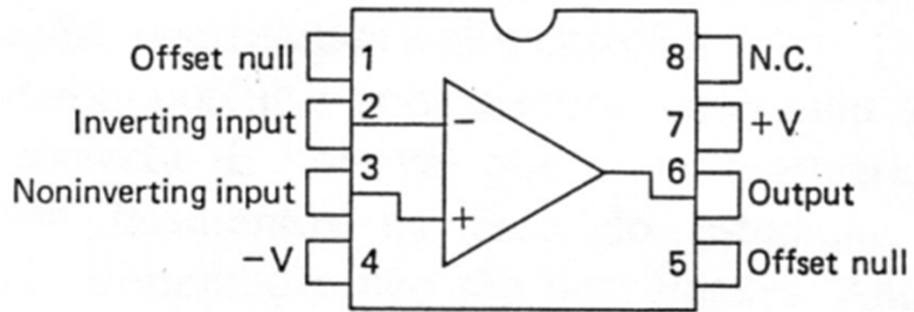
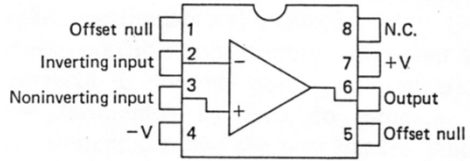


Amplificador Operacional (741)

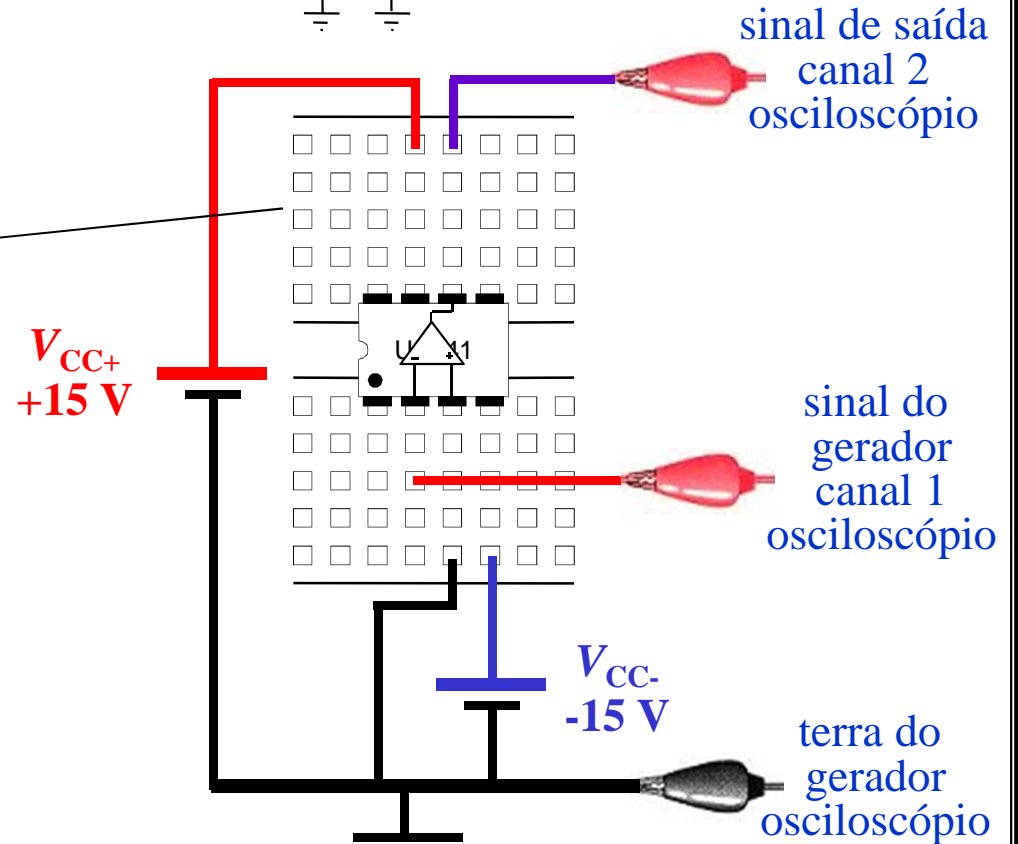
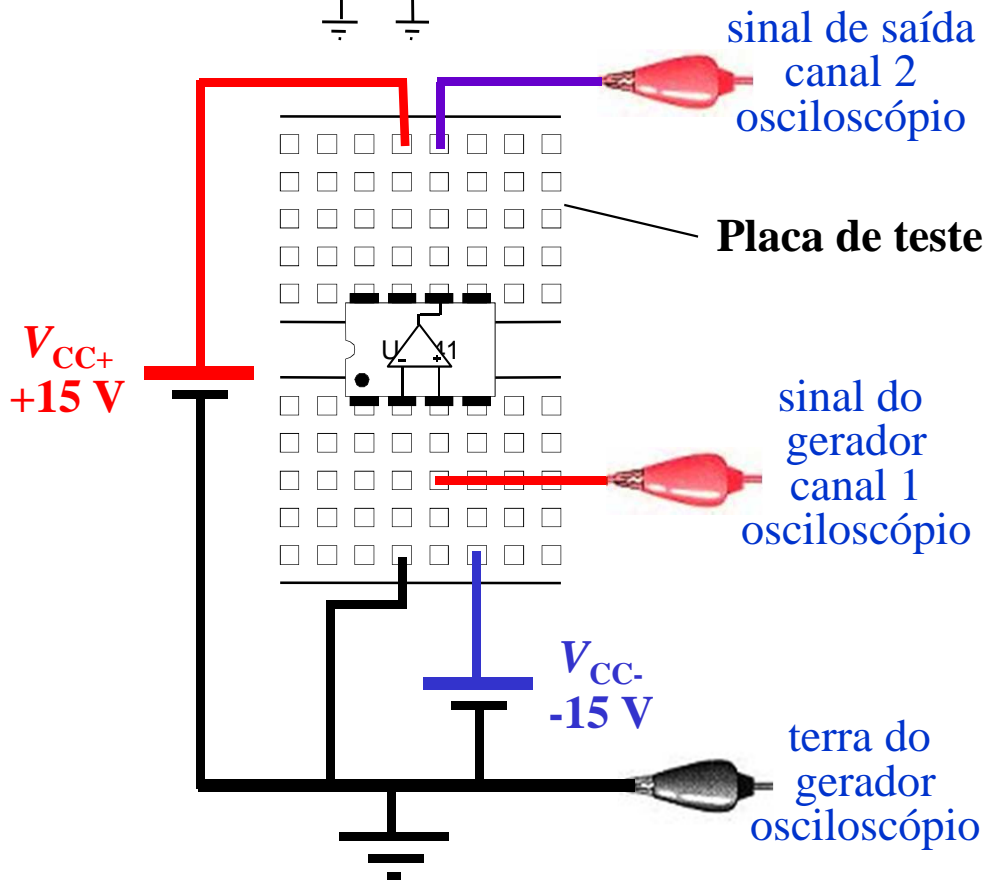
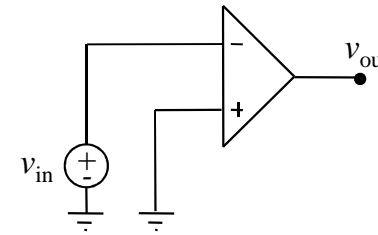
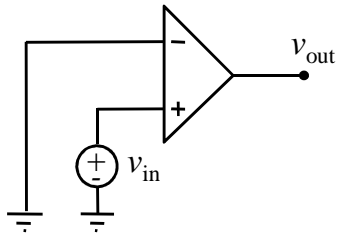
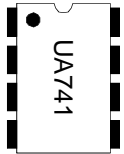


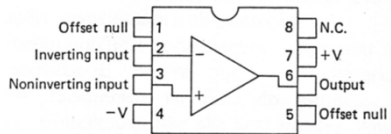
Amplificador Operacional (741)





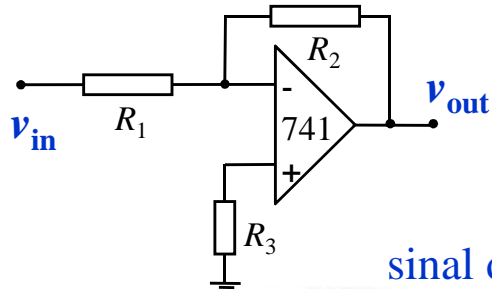
Montagens em Malha Aberta na Placa de Teste (Montagens sem re-alimentação: detector de zero)





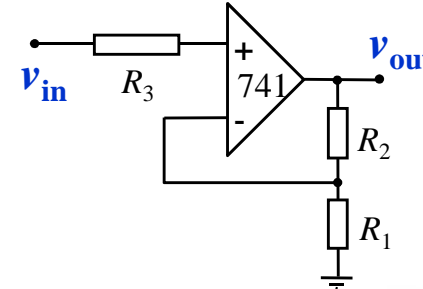
Montagens com Re-alimentação na Placa de Teste

Montagem Inversora

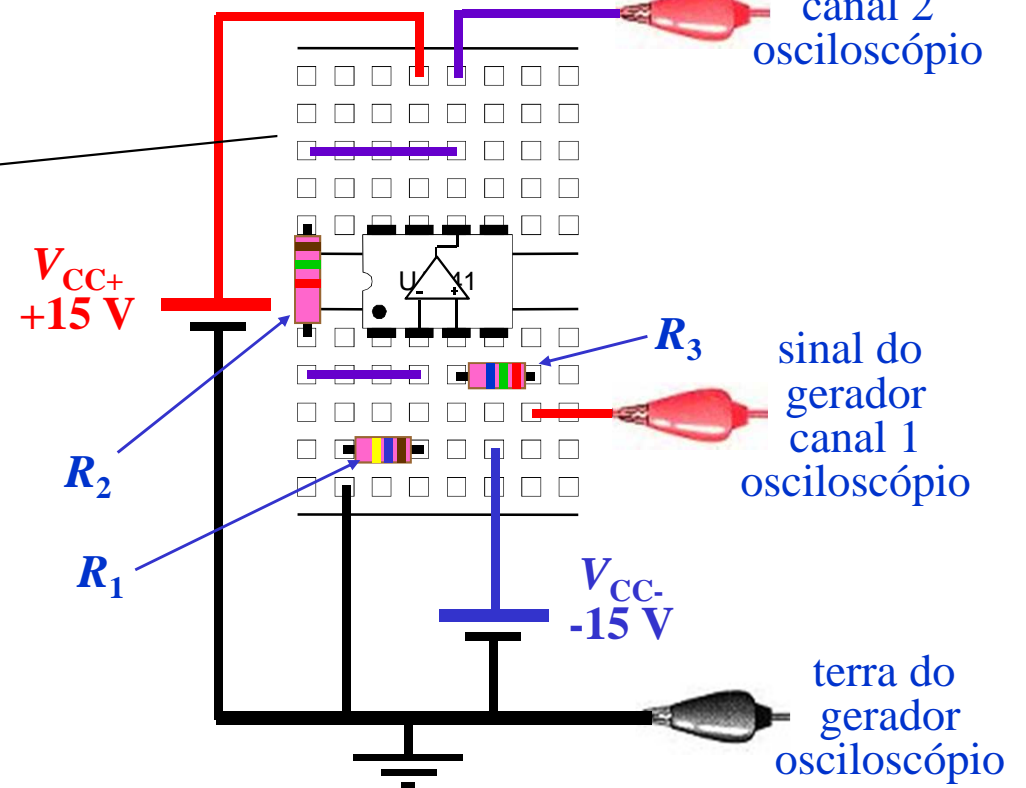
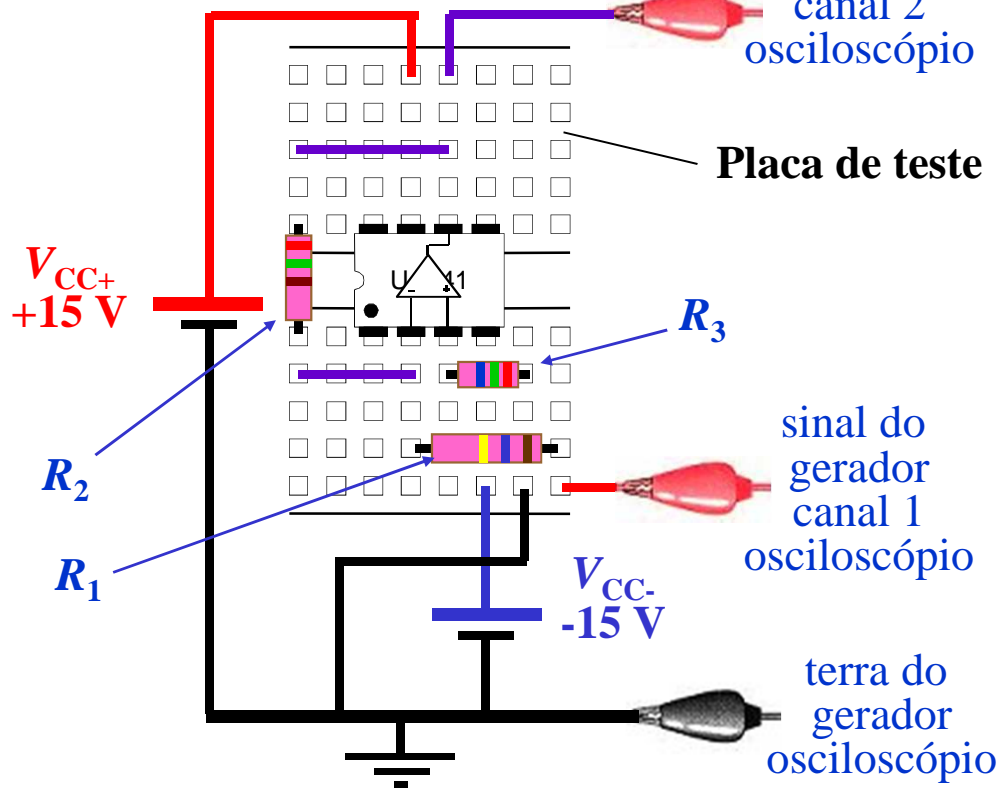


canal 2
osciloscópio

Montagem Não-Inversora



canal 2
osciloscópio



Filtros-Ativos: montagem na placa de teste

